



Apartment

# FLAT 1, 54 PRINCE OF WALES ROAD, NORWICH, NR1 1LL

PCM

## £775 PCM

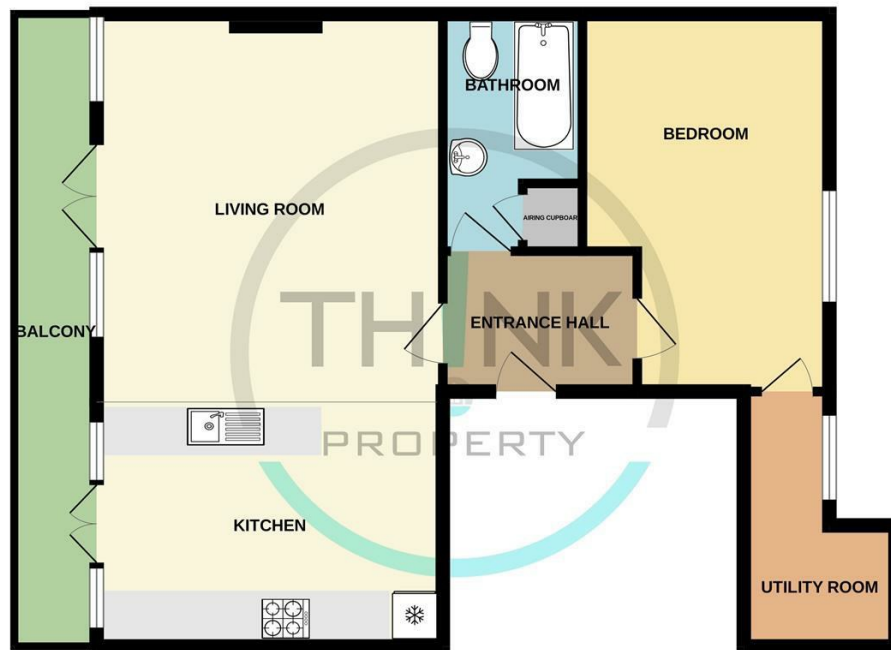
### FEATURES

- City Centre
- One Double Bedroom
- Gas Central Heating
- Transport Links
- Apartment
- Open Plan
- Local Amenities
- Council Tax Band



# 1 Bedroom Apartment located in Norwich

\*\*\* Available Now \*\*\* Introducing this one bedroom first floor apartment located on Prince of Wales Road in Norwich City Centre. The property offers a spacious bedroom overlooking the Cathedral, open plan kitchen/ Living space with balcony and a Store room with tumble dryer.



TOTAL FLOOR AREA: 651 sq.ft. (60.5 sq.m.) approx.  
Whilst every attempt has been made to ensure the accuracy of the floorplan contained here, measurements of doors, windows, rooms and any other items are approximate and no responsibility is taken for any error, omission or mis-statement. This plan is for illustrative purposes only and should be used as such by any prospective purchaser. The services, systems and appliances shown have not been tested and no guarantee as to their operability or efficiency can be given.  
Made with Metropix ©2024

Call us on  
**01603 338433**

[norwich@thinkproperty.ltd](mailto:norwich@thinkproperty.ltd)  
<https://www.thinkproperty.ltd/>

**Council Tax Band**  
**B**

Energy Efficiency Rating		
	Current	Potential
Very energy efficient - lower running costs		
(92 plus) <b>A</b>		
(81-91) <b>B</b>		
(69-80) <b>C</b>	71	75
(55-68) <b>D</b>		
(39-54) <b>E</b>		
(21-38) <b>F</b>		
(1-20) <b>G</b>		
Not energy efficient - higher running costs		
England & Wales		
	EU Directive 2002/91/EC	

Agents Note: Whilst every care has been taken to prepare these particulars, they are for guidance purposes only. All measurements are approximate and are for general guidance purposes only and whilst every care has been taken to ensure their accuracy, they should not be relied upon and potential buyers are advised to recheck the measurements.

